



Chembio has developed the first dual HIV 1/2 and Syphilis Treponemal antibody detection Point-of-Care (POC) test utilizing Chembio's patented Dual Path Platform (DPP®) technology.

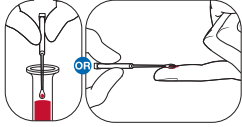
Chembio's DPP® HIV-Syphilis Assay is a single-use immunochromatographic, rapid screening test for the detection of antibodies to Human Immunodeficiency Virus Types 1 and 2 (HIV 1/2) and Syphilis *Treponema pallidum* in fingerstick whole blood, venous whole blood, serum, and plasma. The Chembio DPP® HIV-Syphilis Assay is intended for use as a point-of-care test to aid in the diagnosis of infection with HIV and/or Syphilis.

A qualitative test kit for the detection of antibodies to HIV 1 and 2 and/or Syphilis *Treponema* in fingerstick whole blood, venous whole blood, serum, or plasma specimens.

- Accurate results with documented sensitivity and specificity for both HIV 1/2 and Syphilis antibodies on one device
- Minimal patient sample required, 10 µl finger stick whole blood, serum, or plasma
- Actionable rapid 25-minute results— allows result and counseling at point-of-care
- Simple to perform and read
- Room temperature testing, shipping and storage

Administering Test

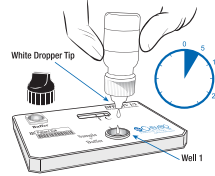
- 1 OBTAIN a blood sample with sample loop.



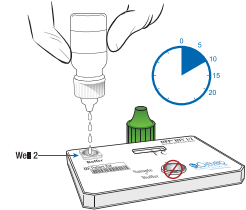
- 2 INSERT the sample loop with collected blood sample into the bottom of the SampleTainer™ device. BEND & TWIST to detach from loop end remaining in vial. REPLACE black cap. GENTLY SHAKE SampleTainer™ device 10 sec.



- 3 REMOVE the black cap. ADD 2 drops into the sample solution diluent well 1. WAIT 5 minutes.



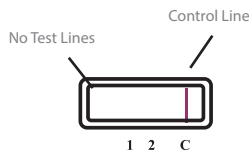
- 4 ADD 4 drops of running buffer (green cap) to developer well 2. vertically READ result between 10 and 25 minutes after the addition of the running buffer to well 2.



Interpretation of Results

NONREACTIVE RESULT One pink/purple line in the CONTROL (C) area, with no lines in the TEST (1) or TEST (2) areas, is a NON-REACTIVE result.

A nonreactive result, 10 to 25 minutes after addition of Running Buffer to "Buffer Well 2," means that no Syphilis or HIV antibodies were detected in the sample.



REACTIVE RESULT One pink/purple line in the CONTROL (C) area, with lines in the TEST (1) and/or TEST (2) areas is a reactive result.



Syphilis Reactive

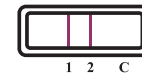


HIV Reactive



Syphilis and HIV Reactive

INVALID RESULT If no control line appears, results are invalid regardless of the presence or absence of a test line.



Invalid



Invalid



Invalid



Invalid

A control line must always be present in the control area (C) for the test to be valid.

If there is no control line after 10 minutes from addition of running buffer to "buffer well 2," the test is invalid. This means there was a problem with the test. Repeat the test with a new device. Be sure that the sample + buffer and the running buffer are added correctly.

Please refer to package insert for full procedure details

Product exclusively available for export to select markets.

Description	Product Code
DPP® HIV-Syphilis Assay	65-9525-0